



19 ATHERTON GARDENS

SPALDING, PE11 3YJ

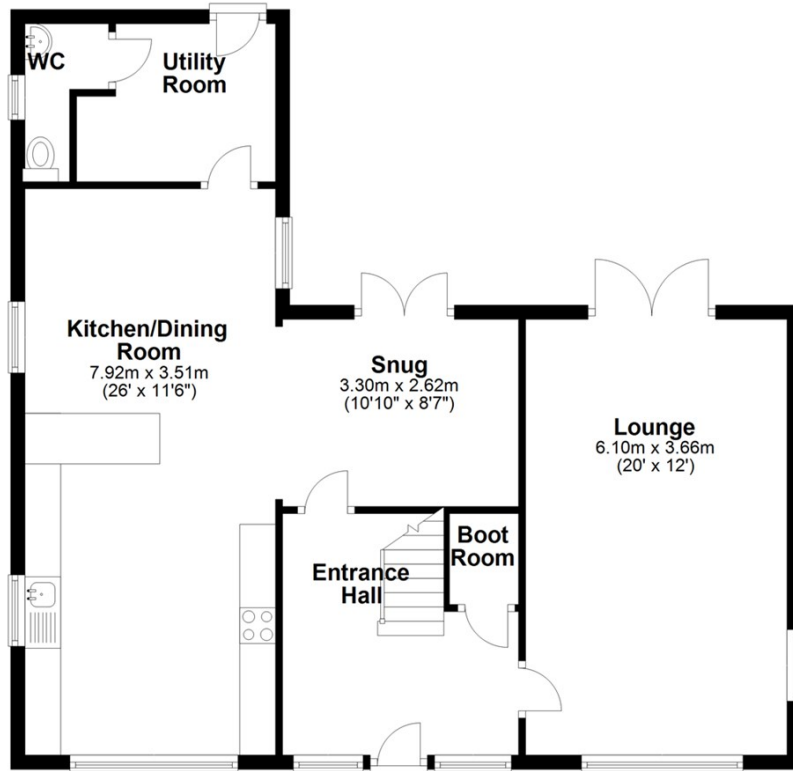
£364,950
FREEHOLD

This beautifully presented four-bedroom detached executive home, located on the highly sought-after Pinchbeck Fields development, offers spacious and versatile living ideal for families and commuters alike. Built by Larkfleet Homes and finished to a high standard throughout, the property features a stunning open-plan kitchen/dining/family room, multiple reception spaces, a luxurious master suite with en-suite, and modern benefits including solar panels. With a private enclosed garden, double garage, and excellent local amenities nearby, this is a superb all-round family home ready to move straight into.

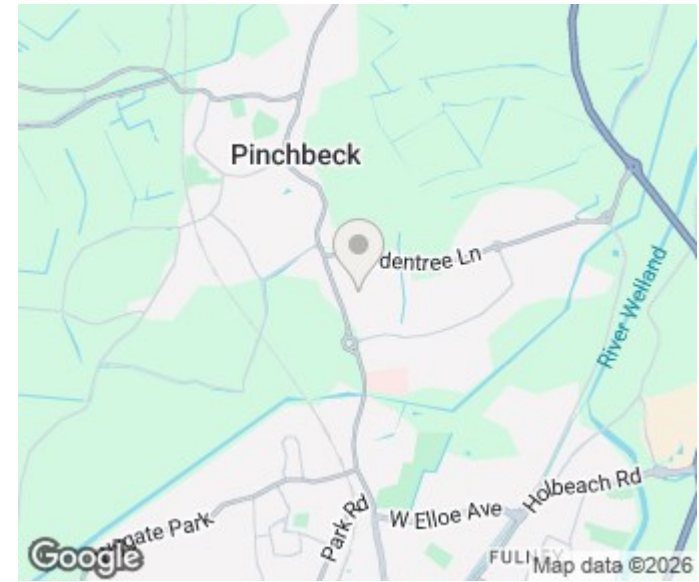


Ground Floor

Approx. 79.3 sq. metres (853.2 sq. feet)



Total area: approx. 155.6 sq. metres (1675.0 sq. feet)
19 Atherton Gardens, Spalding



Energy Efficiency Rating		
	Current	Potential
Very energy efficient - lower running costs		
(92 plus) A		
(81-91) B	87	87
(69-80) C		
(55-68) D		
(39-54) E		
(21-38) F		
(1-20) G		
Not energy efficient - higher running costs		
England & Wales	EU Directive 2002/91/EC	

Agents Note: Whilst every care has been taken to prepare these particulars, they are for guidance purposes only. All measurements are approximate and are for general guidance purposes only and whilst every care has been taken to ensure their accuracy, they should not be relied upon and potential buyers/tenants are advised to recheck the measurements

Spalding Office Sales
 11 The Crescent
 Spalding
 Lincolnshire
 PE11 1AE

01775 713 888
 enquiries@sedge-homes.com
 www.sedge-homes.com

